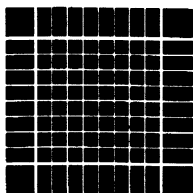




HEWLETT
PACKARD

Automatic Start and Cassette Duplication Module



This HP-41 module provides two important capabilities:

- Automatic start of program execution when the HP-41 is turned on.
- Duplication of cassettes used in the HP 82161A Digital Cassette Drive.

These instructions assume an understanding of the HP-41. Refer to the owner's handbook for the HP-41 or to the owner's manual for the HP 82160A HP-IL Module.

Automatic Start

The automatic start feature provides a means of writing "fool-proof" HP-41 programs. With the automatic start module installed, the HP-41 goes through a special sequence when it is turned on. This sequence allows you to write programs which automatically set status, configure memory, access peripherals, or prompt the user. The automatic start

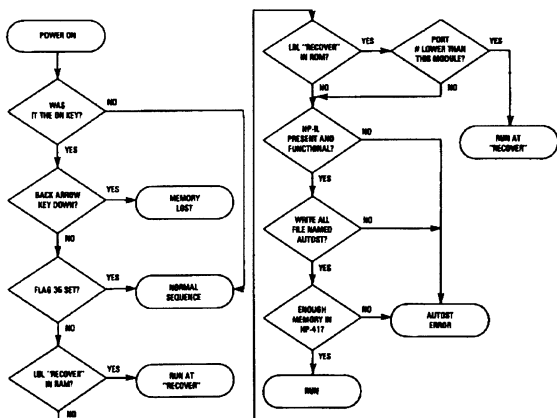
feature looks for one of the following three conditions (in the order listed) in an attempt to start program execution when the HP-41 is turned on.

- A program labeled RECOVER in HP-41 main memory.
- A program labeled RECOVER in an HP-41 port with a lower number than that of the port containing this module.
- A "write-all" file named AUTOST on an HP-IL mass storage device.

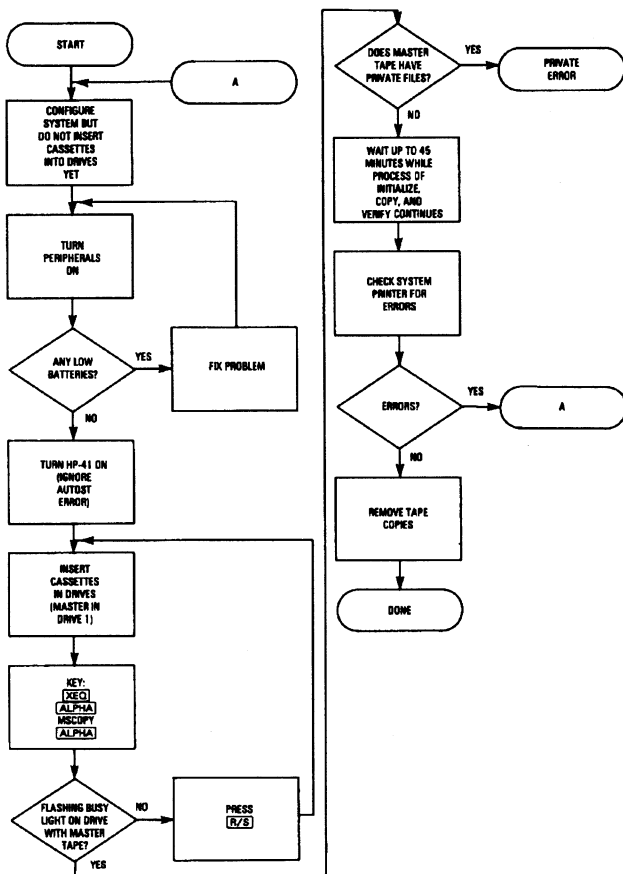
If a program labeled RECOVER is found, the HP-41 will start running from RECOVER.

If RECOVER is not found, the HP-41 will attempt to load the AUTOST file from a mass storage device in the HP-IL loop. The "write-all" file named AUTOST should be recorded with the program pointer positioned for proper program execution. A detailed flow chart of the automatic start process follows:

How Automatic Start Works



How To Do A Mass Copy

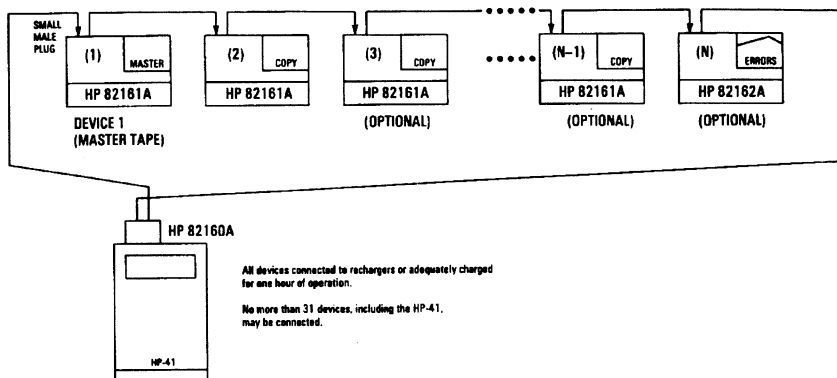


Note: Since MSCOPY destroys the data on all cassettes except the one in the first drive, make sure that you know which drive is the first drive in the loop before attempting to execute MSCOPY. When you execute MSCOPY, the busy light on the first drive will flash for 10 seconds before the copy process begins. This gives you a last chance to save your master cassette if it is in the wrong drive. If the

master is not in the drive with the flashing light, press **R/S** immediately and move the master cassette to the correct drive. Press **R/S** again to restart the copy process.

Note: This module has XROM numbers which are incompatible with the Machine Design Application Module. If you plug both of these modules into the same HP-41, operation will be unpredictable.

Configuration for Mass Copy



Mass Copy

The mass copy feature provides an easy to use means of duplicating programs and data. The information on one HP 82161A Digital Cassette Drive can be copied to as many as 29 other cassettes. This allows software suppliers to manufacture their software, individual users to back up their cassettes, and volume end users to copy and distribute data in cassette form.

The mass copy feature is accessed by the keystrokes:

[XEQ] [ALPHA] MSCOPY [ALPHA]

MSCOPY copies the cassette in the first

drive to all other drives in the HP-IL system. MSCOPY automatically initializes all cassettes (except for the master in the first drive), copies all information from the master to the other drives, and verifies the copies when complete. MSCOPY prints error messages on the optional system printer for cassettes which fail to verify properly. MSCOPY will not copy HP-41 cassettes with private files.

The following configuration diagram and flow chart detail the operation of MSCOPY.

Notice

Hewlett-Packard Company makes no expressed or implied warranty with regard to the program material offered or the merchantability or the fitness of the program material for any particular purpose. The program material is made available solely on an "as is" basis, and the entire risk as to its quality and performance is with the user. Should the

program material prove defective, the user (and not Hewlett-Packard nor any other party) shall bear the entire cost of all necessary correction and all incidental or consequential damages. Hewlett-Packard Company shall not be liable for any incidental or consequential damages in connection with or arising out of the furnishing, use or performance of the program material.

**HEWLETT
PACKARD**

Corvallis Division
1000 N.E. Circle Blvd., Corvallis, OR 97330, U.S.A.

Scan Copyright ©
The Museum of HP Calculators
www.hpnmuseum.org

Original content used with permission.

Thank you for supporting the Museum of HP
Calculators by purchasing this Scan!

Please to not make copies of this scan or
make it available on file sharing services.