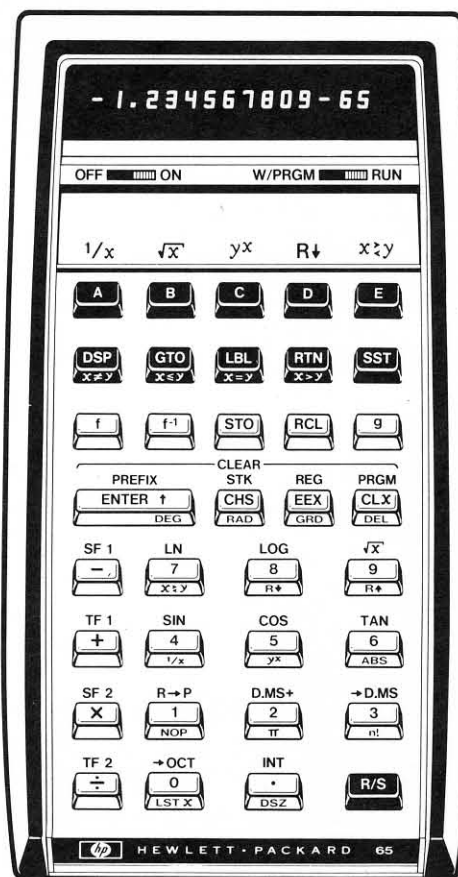




**HP-65**

**PROGRAM FORMS**



### Merged Operations

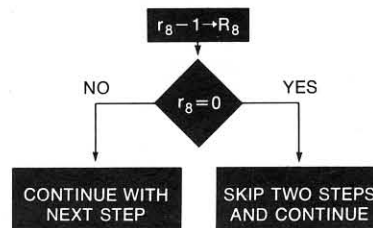
STO 1	STO 5	RCL 1	RCL 5	$g\ x \neq y$	$g\ x \nabla y$
STO 2	STO 6	RCL 2	RCL 6	$g\ x \leq y$	$g\ R+$
STO 3	STO 7	RCL 3	RCL 7	$g\ x = y$	$g\ R+$
STO 4	STO 8	RCL 4	RCL 8	$g\ x > y$	$g\ NOP$
					$g\ LSTX$

### To create and record a program:

1. Set the W/PRGM—RUN switch to W/PRGM.
2. Press **f** **PRGM** to clear memory.
3. Key in program steps.
4. Insert an unprotected (unclipped) card (printed side up) in the right, lower slot of the calculator. When the motor advances it through the card reader and out the left side of the calculator, the program is stored on the magnetic card.
5. Set the W/PRGM—RUN switch to RUN, and the program is ready to be used.
6. The information recorded on the card can be protected (that is, further recording is not allowed) if you clip off the upper left corner of the card.

### Notes:

1. **STO** **9** and **RCL** **9** are not merged into one program step.
2. Trigonometric functions, rectangular-polar conversions and relational operations (  **$x \neq y$** ,  **$x \leq y$** ,  **$x = y$** ,  **$x > y$**  ) use register  $R_9$  for scratch.
3. Conditional operations (  **$x \neq y$** ,  **$x \leq y$** ,  **$x = y$** ,  **$x > y$** , **TF1**, **TF2** ) skip two steps if false.
4. **DSZ** decrements contents ( $r_8$ ) of register  $R_8$  and tests against zero as shown below:



# HP-65 Program Form

Title \_\_\_\_\_ Page \_\_\_\_\_ of \_\_\_\_\_

SWITCH TO W/PRGM. PRESS ☐ PRGM TO CLEAR MEMORY.

KEY ENTRY	CODE SHOWN	COMMENTS	KEY ENTRY	CODE SHOWN	COMMENTS	REGISTERS
						R <sub>1</sub> _____
						_____
						R <sub>2</sub> _____
						_____
						R <sub>3</sub> _____
						_____
10			60			R <sub>4</sub> _____
						_____
						R <sub>5</sub> _____
						_____
						R <sub>6</sub> _____
						_____
20			70			R <sub>7</sub> _____
						_____
						R <sub>8</sub> _____
						_____
						R <sub>9</sub> _____
						_____
						LABELS
30			80			A _____
						B _____
						C _____
						D _____
						E _____
						O _____
						1 _____
						2 _____
						3 _____
						4 _____
40			90			5 _____
						6 _____
						7 _____
						8 _____
						9 _____
						FLAGS
						1 _____
						2 _____
50			100			_____

# HP-65 User Instructions

Title \_\_\_\_\_ Page \_\_\_\_\_ of \_\_\_\_\_

---

Programmer \_\_\_\_\_ Date \_\_\_\_\_

[illegible]

Scan Copyright ©  
The Museum of HP Calculators  
[www.hpmuseum.org](http://www.hpmuseum.org)

Original content used with permission.

Thank you for supporting the Museum of HP  
Calculators by purchasing this Scan!

Please do not make copies of this scan or  
make it available on file sharing services.